

# High Performance Industrial Thermal Solutions



## M84Pro Series Printers

The *Pro* Series high-performance industrial printers are ideal for a range of applications, including:

-  **PCB Labeling**
-  **Component Marking**
-  **Ticketing**
-  **Retail Labeling**
-  **Compliance Labeling**
-  **Shipping/Receiving**
-  **Asset Tracking**
-  **WMS**

### Heavy Duty Metal Construction

The *Pro* Series' rugged all-metal design makes these printers ideal for heavy-duty use in the harshest environments. The metal enclosure provides full protection of the print mechanism and media in any mission-critical application.

### High Speed and Performance

The M84Pro uses the latest technology to provide maximum performance and eliminate wait time. The powerful RISC CPU delivers print speed of up to 10 inches (25.4 cm) per second, enabling you to generate the most complex label formats quickly and efficiently.

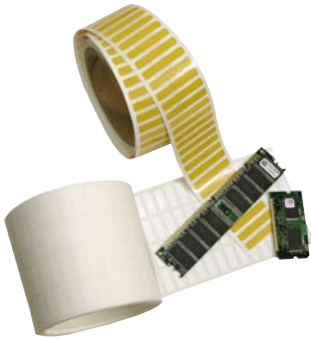
### User Configurable Print Resolution

The *Pro* Series printers offer superior print quality at 203, 305, and 609 dpi. By simply changing the print head, you can quickly convert the M84Pro into any of three available print resolutions.



Performs best with  
**Techno**  
T H E R M  
Labels & Ribbons

# SPECIFICATIONS



	M84Pro(2)	M84Pro(3)	M84Pro(6)
<b>Printing Method</b>	Thermal Transfer/Direct Thermal		
<b>Print Resolution</b>	203 dpi (8 dpmm)	305 dpi (12 dpmm)	609 dpi (24 dpmm)
<b>Print Speed</b>	10 ips (254 mm/s)	8 ips (200 mm/s)	6 ips (150 mm/s)
<b>Media Width</b>	Max. 5" (128 mm) / Min. 0.87" (22 mm)		
<b>Max. Print Width</b>	4.1" (104 mm)		
<b>Min. Print Length</b>	0.24" (6 mm) - continuous / 0.63" (16 mm) - tear off / 1.18" (30 mm) - cutter/dispenser		
<b>Max. Print Length</b>	49.2" (1249 mm)	32.8" (833 mm)	14" (356 mm)
<b>Max. Ribbon Size</b>	4.4" (111 mm) W x 1475' (450 m) L - Face-In		
<b>Dimensions</b>	10.4" (265 mm) W x 17.1" (435 mm) D x 13.4" (341 mm) H		
<b>Weight</b>	39.7 lbs (18 kg)		

## Memory:

- 16 MB Standard RAM
- 2 MB Standard Flash
- 4 MB Flash - Optional
- 1 MB or 256k PCMCIA - Optional

## Processor:

32-BIT RISC

## Media:

Roll-fed or fan-fold, die-cut or continuous direct thermal (thermal transfer) labels, synthetics, and tag stock with or without black mark, gap, or notch.

- Max. Caliper: 0.01" (0.25 mm)
- Max. Roll Diameter: 8.6" (218 mm)
- Wind: Face-In

## Sensing:

- Adjustable transmissive sensor for gap
- Reflective sensor for black mark
- Automatic, programmable top of form
- Label present sensor (opt. w/dispenser)
- Ribbon-out sensor

## Plug-In Interface Modules:

- Serial - RS232 (up to 57.6k bps)
- Parallel - IEEE1284 (ECP)
- Ethernet - 10/100BaseT
- Wireless 802.11g
- Twinax/Coax
- RS422/485
- USB (Factory Installed)

## Barcode Symbolologies:

**Linear:** UPC-A, UPC-E, EAN-8, EAN-13, Code 39, Code 93, Code 128, Codabar, MSI, Bookland, Industrial 2/5, Interleaved 2/5, Matrix 2/5, Postnet™, GS1-128, GS1-DataBar™

**2-Dimensional:** PDF417, Micro PDF417, Truncated PDF417, Maxicode™, Data Matrix, QR Code, Composite Symbology

## Fonts:

- Bitmap - 12 proportional, mono-spaced and outline fonts (Code table 858)
- Scalable Internal CG Triumvirate® and CG Times® fonts
- Optional Downloaded TrueType® fonts, scalable from 8 to 72 points

## Barcode and Font Formatting:

- 360° rotation of barcodes and text
- Horizontal and vertical character expansion
- Sequential numbering
- Form overlay for high-speed editing of complex formats

## Graphic Support:

Printing and storage of \*.PCX, \*.BMP format, SATO Hex/binary

## Software:

- Windows® Drivers (Windows® 2000, XP, 2003, Vista and Windows 7)
- Label Software (*Label Gallery Free*)
- Printer Utilities

## Electrical Requirements:

115V/220V (± 10%), 50/60 Hz (± 1%)

## Agency Certifications:

CE, UL, CSA, TÜV

## Environmental Requirements:

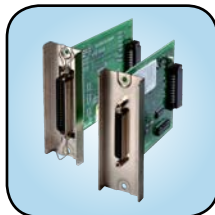
Operating: 41° to 104°F (5° to 40°C)  
 15-85% RH, non-condensing  
 Storage: 23° to 140°F (-5° to 60°C)  
 Max. 90% RH, non-condensing  
 EDS: 8kV

## Optional Features:

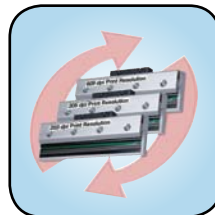
- Label Cutter
- Label Rewinder
- Real Time Clock
- Label Gallery
- Label Dispenser
- Memory Expansion
- Plug-In Interface



Memory Expansion



Plug-In Interface Modules



Printerheads



Rewinder