

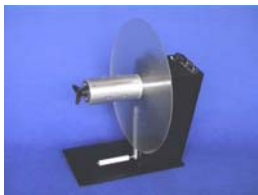
''UCAT'' Heavy-Duty Label Unwinders (Page 1 of 2)

There are two categories of Label Unwinders: Powered and Non-powered. A powered Unwinder provides motorized assistance to feed labels into the printer. A non-powered Unwinder is a less expensive, but passive unit that provides no unwind assistance. With non-powered Unwinders, the printer must physically pull the blank label stock off the roll and into the printer. This force may cause stress and registration problems or lead to early failure of the printer's label advance mechanism. A powered Unwinder is always preferred over a non-powered Unwinder. Choose a "Quick-Chuck"[™] Core Holder for the most convenient mounting of label rolls possible.

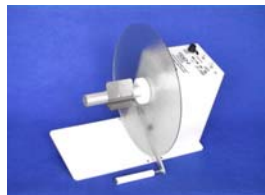
Part 1 - Powered Label Unwinders

LABELMATE's UCAT-2 and UCAT-40 powered Unwinders are the most advanced Unwinders on the market and are specialized for the unwinding job. They monitor the label demand from the printer to provide sophisticated control for the Unwind process. The speed of power assist can be conveniently adjusted with the "TORQUE Control Knob.

Some Powered Unwinder Models



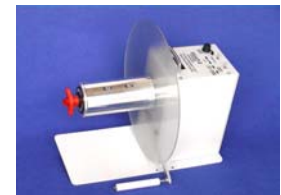
UCAT-40 "The Ultimate"



Standard UCAT-2



UCAT-2-ACH



UCAT-2-CHUCK

Powered "UCAT" Heavy-Duty Label Unwinders

MODEL	ADD SUFFIX	POWERED UNWINDERS - DESCRIPTION	WIDTH	ROLL DIAMETER	SPEED
UCAT-40 <i>The Ultimate Unwinder!</i>	(NONE)	Premium Heavy-duty 16" diameter Powered Unwinder with 3" diameter "Quick-Chuck" [™] . Continuously adjustable feed rate. Control arm tracks label usage and starts & stops unwinding automatically. Please see photo on previous page. Also rewinds. With inner flange only. *	Up to 6"	Up to 16" (40 cm)	Up to 30 ips
UCAT-40-CHUCK10	(NONE)	Same as UCAT-40, but with 3" diameter 10" wide "Quick-Chuck" [™] . 4" diameter also available.	Up to 10"	Up to 16" (40 cm)	Up to 30 ips
UCAT-2	(NONE)	Heavy-duty Powered Unwinder for label rolls with 3" cores. Continuously adjustable feed rate. Control arm tracks label usage and starts & stops unwinding automatically. Includes outer flange. Also rewinds.	Up to 6"	Up to 12"	Up to 30 ips
	-ACH	UCAT-2 with a universal Adjustable Core Holder for any core size 1" to 4" in diameter. Also rewinds. With inner flange only.			
	-CHUCK	UCAT-2 with 3" diameter "Quick-Chuck" [™] Includes outer flange. Also rewinds. *			
	-W10	UCAT-2 with wide shaft for labels up to 10" wide. For 3" diameter cores. Includes outer flange. Also rewinds.	Up to 10"		
	-CHUCK10	UCAT-2 with 10" wide 3" diameter "Quick-Chuck". Includes outer flange. Also rewinds.	Up to 10"		

* 1.5-inch, 40-mm, 70-mm "Quick-Chucks" are also available at the same price; for 4-inch diameter, add \$50.

Distributed by:

MPI Label Systems

(866) 364-3585 (330) 238-4200 FAX (330) 823-5483

www.mpilabels.com

E-mail: info@mpilabels.com

Mfg plants in CA, CT, IL, NC, OH, MD, TN, TX

''ucat'' Heavy-Duty Label Unwinders (Page 2 of 2)

Part 2 - Non-powered Label Unwinders

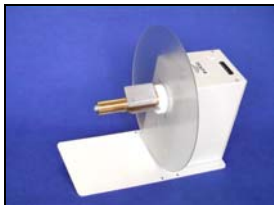
Non-powered Unwinders are less expensive, but require that your printer pull the labels off the roll and into your printer. To reduce wear and tear on your printer, and for larger label rolls, choose a Powered Unwinder.

Non-Powered "UCAT" Heavy-Duty Label Unwinders

MODEL	ADD SUFFIX	NON-POWERED UNWINDERS - DESCRIPTION	WIDTH	ROLL DIAMETER	SPEED
UCAT-S	(NONE)	Economy Non-powered Label Unwinder with limited fixed braking. For 3" diameter cores only.	Up to 6"	Up to 12"	Rec. 10 ips max.
UCAT-1	(NONE)	Heavy-duty Unwinder for 3" diameter cores. Self-powered with adjustable "Speed-Proportional Frictionless Braking" [™] .			Up to 30 ips
	-1-INCH	UCAT-1 for 1" diameter cores.			
	-ACH	UCAT-1 with a universal Adjustable Core Holder for core sizes 1" to 4"			
	-CHUCK	UCAT-1 with 3" diameter "Quick-Chuck" [™] Core Chuck. *			
	-W10	UCAT-1 for labels up to 10" wide. For 3" diameter cores.			
	-CHUCK10	UCAT-1 with 3" diameter 10" wide "Quick-Chuck".			
	-R16	UCAT-1 with 16" roll diameter. For 3" diameter cores. Also available with "Quick-Chuck." Add \$150.	Up to 6"	Up to 16"	
UCAT-FLANGE		Optional outer Flange for UCAT-1 or UCAT-S. See center photo below.	N/A	Up to 12"	N/A

* 1.5-inch, 40-mm, 70-mm diameter "Quick-Chucks" are also available at the same price. Add \$50 for the 4-inch diameter.

Some Non-powered UCAT Unwinder Models



The economical UCAT-S



UCAT-1 with optional outer UCAT-FLANGE



UCAT-1-ACH

In summary, there is a Powered or Non-powered Unwinder model that will improve the performance and efficiency of just about any printing operation. Call LABELMATE for free assistance in choosing the best Unwinder for your needs.

All LABELMATE Products are industrial-quality and maintenance-free. All Rewinders and Unwinders are backed by a **5-Year Parts and Labor Limited Warranty**, the longest in the industry. Order a LABELMATE UCAT Unwinder to solve your label supply roll problems, today!

Base plate footprint: 7 x 15" (180 x 356mm) **Weight:** 19.9lbs (9kg) to 28lbs (13kg).

Power Requirements: UCAT-S & UCAT-1: No power required.

Others: 120vac 60Hz 50va. max. (220-240vac 50Hz available).

Specifications are subject to change without notice.

DataUCAT Rev. 2006-09

Distributed by:

MPI Label Systems

(866) 364-3585 (330) 238-4200 FAX (330) 823-5483

www.mpilabels.com

E-mail: info@mpilabels.com

Mfg plants in CA, CT, IL, NC, OH, MD, TN, TX