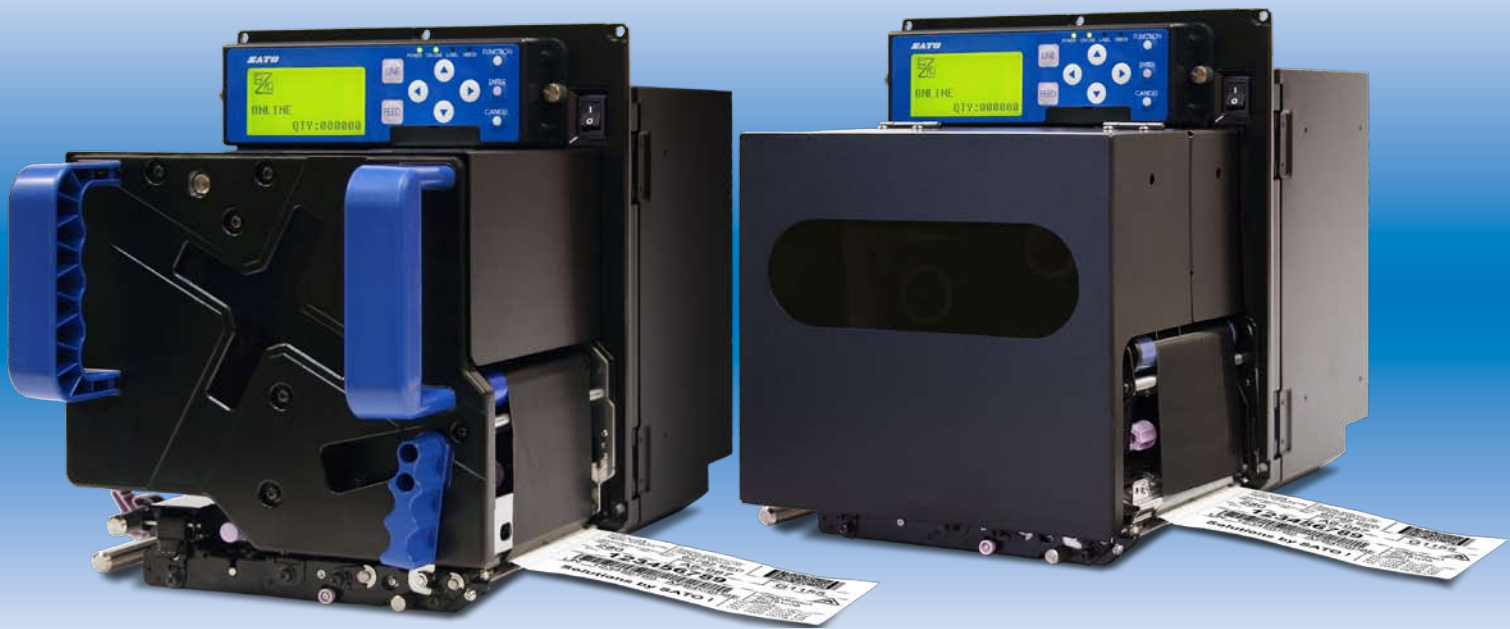




S84 Series **OEM Print Engine**

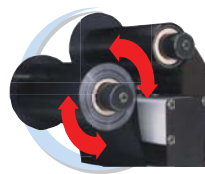
Industry Leading Performance in Print & Apply Systems



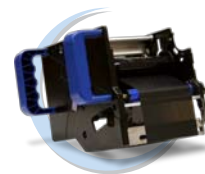
Large-LCD display and icon-driven user interface makes operation easy and intuitive



Available in 203, 305 or 609 dpi in an interchangeable printhead design



1,000 m ribbon capacity & bi-directional ribbon drive offers larger production runs & greater ribbon compatibility



All-new optional ribbon saver and ribbon cassette



16 ips print speed, 16 MB of RAM and state of the art processor get the label where you need it when you need it

General Specifications

MODEL		S8408	S8412	S8424
PRINTING SPECIFICATION				
Print Method		Thermal Transfer/Direct Thermal		
Print Resolution		203 dpi (8 dpmm)	305 dpi (12dpmm)	609 dpi (24 dpmm)
Print Speed		4 to 16 ips	4 to 14 ips	2 to 6 ips
Max. Print Area	Width	4.09" (104 mm)		
	Length	98.4" (2,500 mm)	59.0" (1,500 mm)	15.7" (400 mm)
MEDIA SPECIFICATION				
Sensor Type		Adjustable Gap (See-through) Sensor, Reflective Sensor		
Media Type		Die-Cut Labels, Waste Removed, Roll, 0.125" gap		
Media Size	Width (incl. Liner)	0.5" – 5.15" (13 mm - 131 mm)		
	Length	0.6" (15 mm) to Max. Print Area		
	Thickness	0.002" - 0.012" (0.05 mm - 0.31 mm)		
Ribbon (CSI/CSO)	Width	0.98" – 5.0" (25 mm - 128 mm)		
	Length	Max. 3,280' (1,000 m)		
Ribbon Saving		Factory Option		
Ribbon Cassette (Quick-Change)		Factory Option (uses std. ribbon)		
MEMORY/PROCESSING				
Processor		32-bit RISC		
Memory		4 MB Flash ROM, 16 MB SDRAM, Optional Compact Flash		
Receive Buffer		2.95 MB max.		
Real Time Clock		Standard		
FONT / SYMBOLOGIES				
Internal Fonts	Standard Fonts	XU, XS, XM, XB, XL, Outline, OCR-A, OCR-B		
	Raster Fonts	CG Times (Serif), CG Triumvirate (San Serif)		
Barcode Symbologies	Linear	UPC-A/E, EAN-8, EAN-13, Code 39, Code 93, Code 128, Codabar, MSI, Bookland, Industrial 2/5, Interleaved 2/5, Matrix 2/5, Postnet™, GS1-128, GS1-DataBar™, Intelligent Mail® Barcode (IMB)		
	2-Dimensional	PDF417, Micro PDF417, Truncated PDF417, Maxicode™, Data Matrix, QR Code, Composite Symbology		
COMMUNICATION INTERFACES				
I/F-1 (PCI Bus):		1 per printer: RS232C (9-pin); USB; Ethernet		
I/F-2 (Std. Interface):		1 per printer: IEEE1284 (Parallel); RS232C (25-pin); USB; Ethernet (10BaseT/100BaseTX auto-switching); Wireless LAN (802.11g); RS422/485		
EXT Port (Applicator Interface)		14-Pin Centronics style connector (opt. 25-pin D-sub)		
OPERATING CHARACTERISTICS				
Power Requirements		100 - 240 VAC (+/- 10%); 50/60 Hz; Auto-Switching		
Environment	Operating	41° - 104°F (5° - 40°C); 15% - 85% RH, non-condensing		
	Storage	0° - 140°F (-20° - 60°C); 15% - 85% RH, non-condensing		
Dimensions		9.7" (245 mm) W x 16.1" (408 mm) D x 11.8" (300 mm) H		
Weight		35.2 lbs. (16.0 kg) Standard Configuration		

*Specifications subject to change without notice

Label Gallery 3 - Label Design Software

LG EASY - Entry-Level

- Entry-level labeling software
- Linear and Standard 2D barcodes
- Wizard-based basic barcode labeling



LG PLUS - Advanced

- Advanced & compliance label design
- RFID support (HF & UHF/EPC)
- Complete database support
- API programming interface (ActiveX, .NET)
- Downloading to memory
- VB scripting
- System management (user login, reprint support)
- Print only version



LG TRUE PRO with WinCE

- All features of Plus Version
- RFID support (HF & UHF/EPC)
- Middleware integration module
- Creating standalone label applications
- Mobile wireless printing (WinCE support)
- Network version
- Label format export (SAP R/3 ITF, XML)
- Programming integration option



SATO America, Inc.

10350-A Nations Ford Road, Charlotte, NC 28273
 Phone: (704) 644-1650 Fax: (704) 644-1662
 E-mail: satosales@satoamerica.com