

Model 3155



## 3155 Wipe-On

Primary Applicator

Have a Label-Aire Authorized Distributor  
contact you. Visit [www.label-aire.com](http://www.label-aire.com).



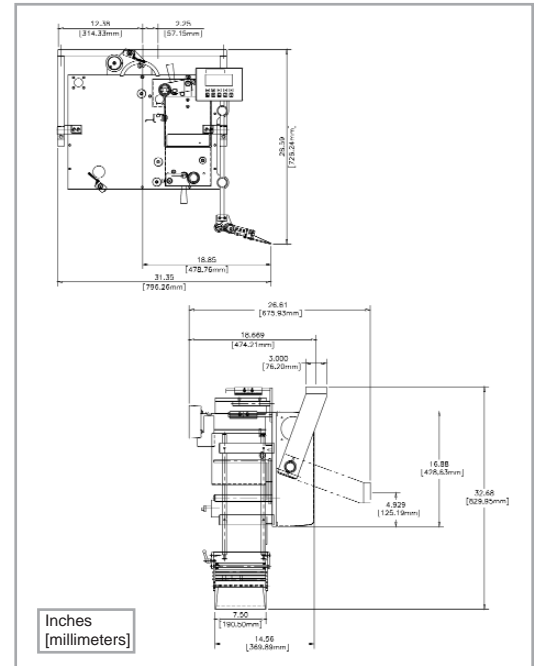
# 3155 Wipe-On Specifications

The Label-Aire® Model 3155 makes labeling easier and faster...making you more profitable.

The Model 3155 Wipe-On labeler delivers on its promise of speed, accuracy, and ease of use. And that translates into lower operating costs and increased productivity for your business.

Speeds up to 5,000 inches (127 m) of web per minute make the Model 3155 an ideal choice for demanding applications requiring high speed and precision. Advanced features include Automatic Speed Following (ASF) which allows product surface profiling, ensuring wrinkle-free labeling on even the most difficult product shapes and label materials (optional encoder required). Zero Downtime Labeling allows your production to continue without costly interruptions. Product/label queuing and missing label compensation virtually eliminate unlabeled products or missing lot and expiration codes.

Put this high-speed wipe-on pressure-sensitive technology to work for you all day, every day. The Model 3155 Wipe-On labeler is built to meticulous quality standards and designed to withstand the most demanding operation.



Stated dimensions are approximations. Please consult factory if dimensions are required for line integration.

## 3155 Wipe-On Advanced Features

<b>Automatic setup</b>	Includes multiple programmable label pages for easy changeovers to different label sizes.
<b>Stepper motor drive</b>	For precise starting/stopping, increased reliability, wider range speed variability, and lower maintenance.
<b>R3 digital display</b>	Select from five languages (English, French, German, Italian, Spanish), domestic or CE (European) configurations, standard/metric unit display and detailed alarm messages. Can rotate 360°.
<b>Automatic Speed Following (ASF)</b>	Labels are accurately applied even through extreme changes in product line speed.
<b>Quick-action collapsible rewind</b>	Allows easy removal of scrap liner.

### Dimensions:

Height: 28.6" (726 mm)  
 Length: 26.6" (676 mm)  
 Width: 31.4" (798 mm)

### Weight:

Approx. 170 lbs. (81 kg)

### Standard Label Dimensions:

Label Width: Up to 7.13" (181 mm)  
 Label Length: 5" (13 mm)

### Dispense Speed:

5,000" (127 m) of web per minute

### Label Dispense Accuracy:

Up to +/- 1/64" (.4 mm)

### Electrical:

115 Volts AC 60 Hz 5 Amps.  
 220 Volts AC 50 Hz optional

### Options:

Encoder kit for Automatic Speed Following  
 Zero Downtime Labeling  
 Hot stamp imprinter  
 Clear label sensor  
 Model 2700 T-Base stand  
**Consult factory for additional options.**



### Headquarters

550 Burning Tree Road  
 Fullerton, CA 92833 USA

o 714.449.5155  
 f 714.526.0300  
 e info@label-aire.com  
 w www.label-aire.com

### Europe

Sjællandsvej 27A  
 DK-9500 Hobro, Denmark

o +45.9657.0063  
 f +45.9657.0064  
 e info@label-aire.com  
 w www.label-aire.com

### Asia

No. 10, Lane 228, Taisi S. Road  
 Longjing Township  
 Taichung County 434, Taiwan

o +886.4.2395.5684  
 f +886.4.2395.8007  
 e info@label-aire.com  
 w www.label-aire.com

### Distributed by:

**MPI Label Systems**  
**866-364-3585**  
**www.mpilabels.com**  
**info@mpilabels.com**